

HG1208FCS-HSP

12mm F0.8

for 1/2 type Cameras, Aspherical High Speed Auto Iris DC Drive
CS-Mount

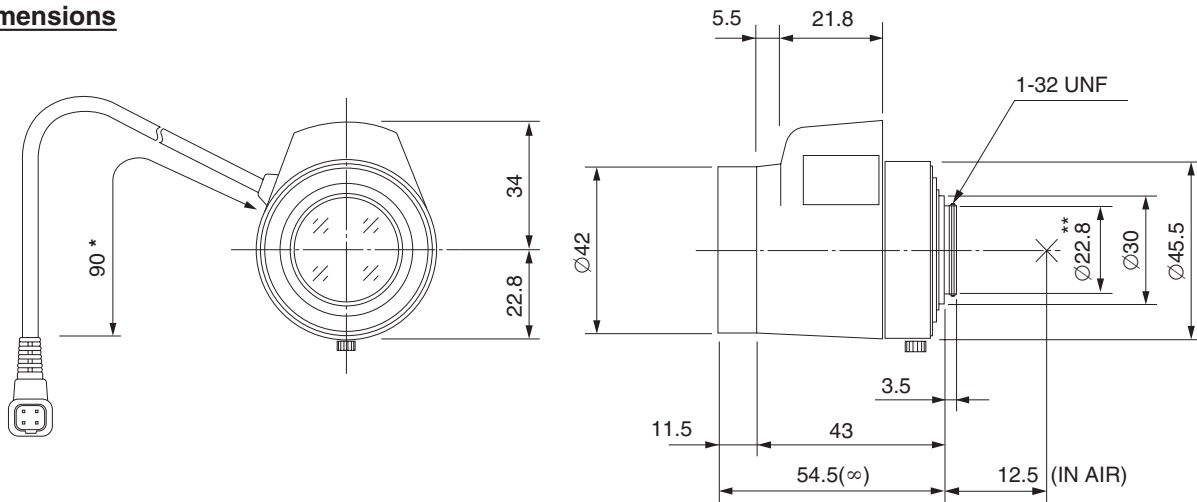
with Focus, w/o Amplifier

Model No.	HG1208FCS-HSP		Effective	Front	Ø27.8mm		
Focal Length	12mm		Lens Aperture	Rear	Ø16.4mm		
Max. Aperture Ratio	1:0.8		Back Focal Length	9.3mm			
Max. Image Format	6.4mm x 4.8mm(Ø8mm)		Flange Back Length	12.5mm			
Operation Range	Iris	F0.8 - F360C		Mount	CS-Mount		
	Focus	0.45m - Inf.		Filter Size	M40.5 P=0.5mm		
Control	Iris	DC Auto Iris		Dimensions	Ø42mm x 56.8mm x 54.5mm		
	Focus	Manual		Weight	135g		
Object Dimension at M.O.D.	25.1cm x 18.8cm						
Angle of View	D	1/2 type	38.6°	1/3 type	29.3°	1/4 type	22.1°
	H		31.2°		23.6°		17.7°
	V		23.6°		17.7°		13.3°
Coil	Drive	190Ω					
	Control	1000Ω					
Operating Temperature	-20°C - +50°C						

1/2 type

M.O.D : Minimum Object Distance

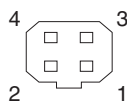
Dimensions



* : 310mm cable is available

CS

Wiring Diagram



Pin No.

1	BROWN	Control (-)
2	RED	Control (+)
3	YELLOW	Drive (+)
4	ORANGE	Drive (-)

**** : for B/W camera**
Using with a B/W camera, please use the attached "B/W aberration compensation filter" and "FB compensation spacer". The filter (M22 P=0.5mm) should be screwed onto the lens from rear side and the spacer should be placed between lens and camera.